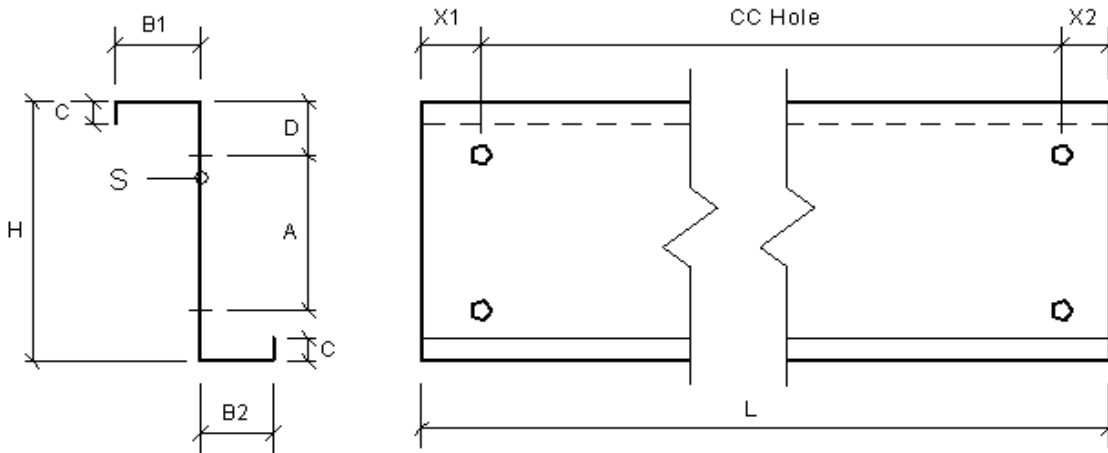


Z-150 ASE

H	B1	B2	C	A	D	Holes	S
150	55	48	23/20	50	50	14x25	

S = thickness

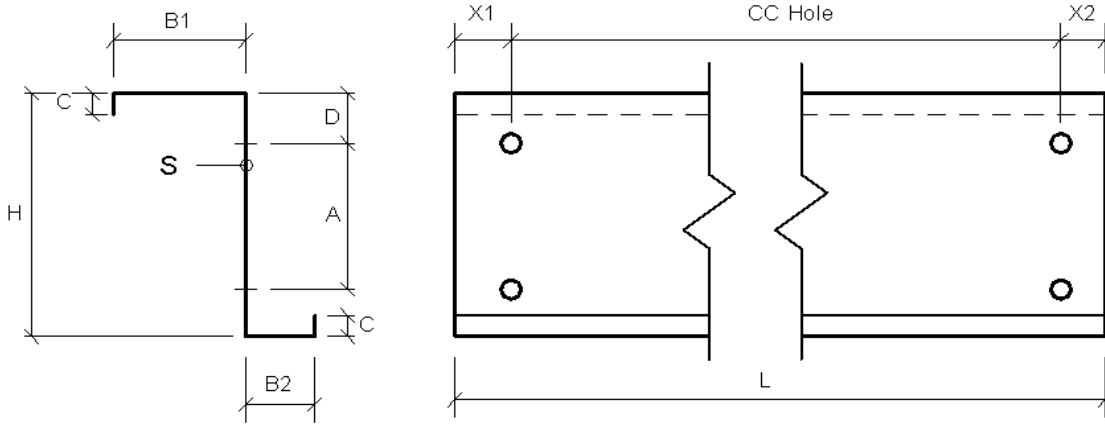


Antal	(L)Længde	CC HOLE	X1	X2	TYPE
		-80	40	40	Z01
		0			
		0			
		0			
		0			
		0			
		0			
		0			
		0			
		0			
		0			
		0			
		0			
		0			
		0			
		0			
		0			
		0			
		0			
Total	Meter				
0	0				

Z-150 ÅSE - M/BRED OVERFLANGE

H	B1	B2	C	A	D	Holes	S
150	100	60	23/20	50	50	14x25	

S = thickness

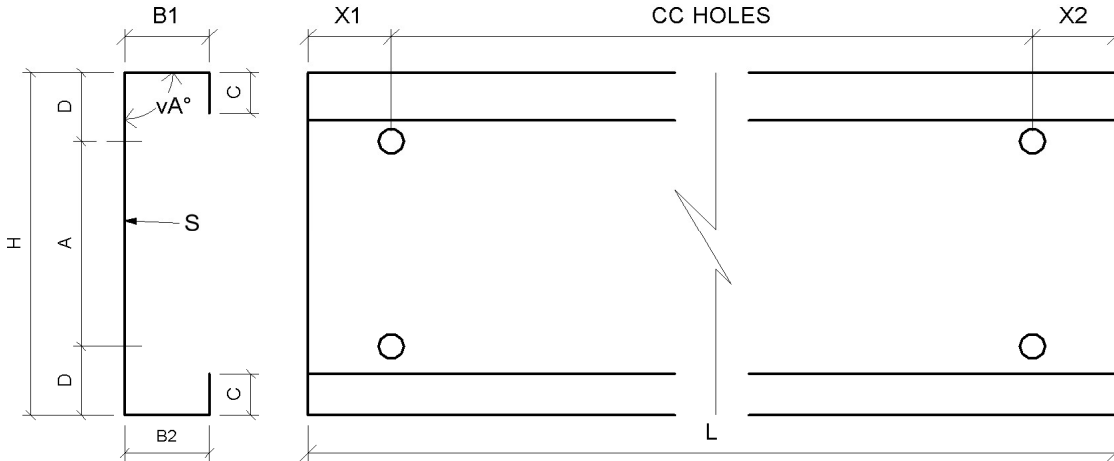


Antal	(L)Længde	CC HOLE	X1	X2	TYPE
		-80	40	40	
		0			
		0			
		0			
		0			
		0			
		0			
		0			
		0			
		0			
		0			
		0			
		0			
		0			
		0			
		0			
		0			
		0			
		0			
		0			
Total	Meter				
0	0				

C-150 ÅSE

H	B1	B2	C	A	D	Holes	vA°	S
150	60	60	23	50	50	14x25	90	

S = thickness

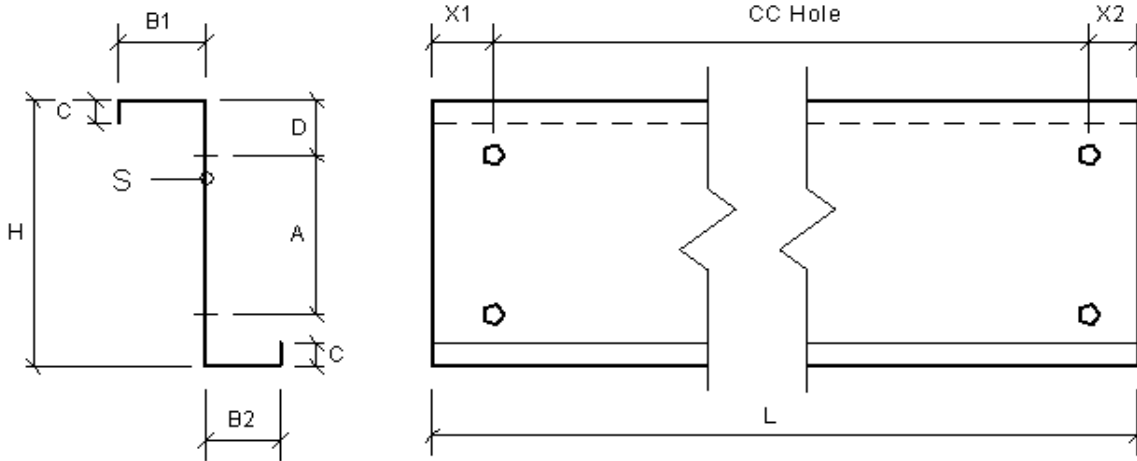


Antal	(L)Længde	CC HOLE	X1	X2	TYPE
		-80	40	40	
		0			
		0			
		0			
		0			
		0			
		0			
		0			
		0			
		0			
		0			
		0			
		0			
		0			
		0			
		0			
		0			
		0			
		0			
Total	Meter				
0	0				

Z-200 ASE

H	B1	B2	C	A	D	Holes	S
200	68	60	23/20	100	50	19x25	

S = thickness

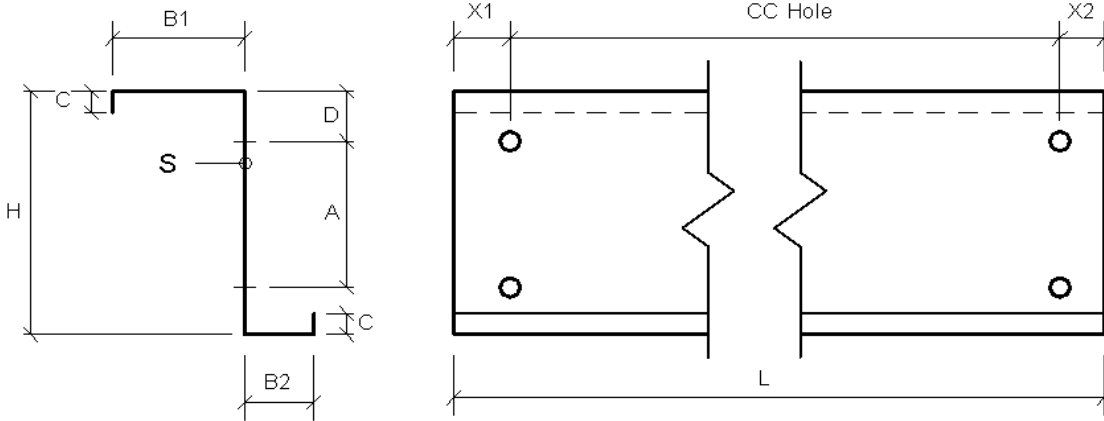


Antal	(L)Længde	CC HOLE	X1	X2	TYPE
		-80	40	40	Z01
		0			
		0			
		0			
		0			
		0			
		0			
		0			
		0			
		0			
		0			
		0			
		0			
		0			
		0			
		0			
		0			
		0			
		0			
Total	Meter				
0	0				

Z-200 ÅSE - M/BRED OVERFLANGE

H	B1	B2	C	A	D	Holes	S
200	100	48	23/20	100	50	19x25	

S = thickness

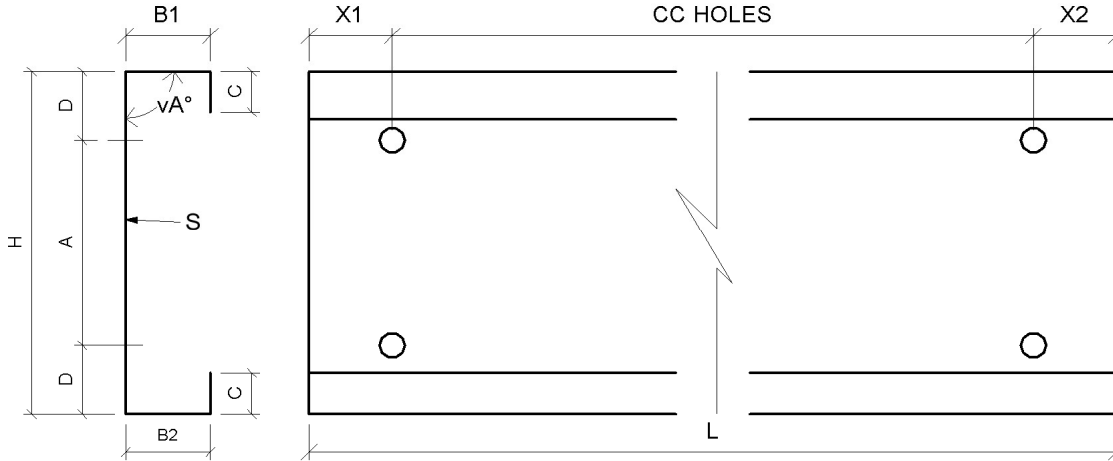


Antal	(L)Længde	CC HOLE	X1	X2	TYPE
		-80	40	40	
		0			
		0			
		0			
		0			
		0			
		0			
		0			
		0			
		0			
		0			
		0			
		0			
		0			
		0			
		0			
		0			
		0			
		0			
Total	Meter				
0	0				

C-200 ÅSE

H	B1	B2	C	A	D	Holes	vA°	S
200	60	60	23	100	50	19x25	90	

S = thickness

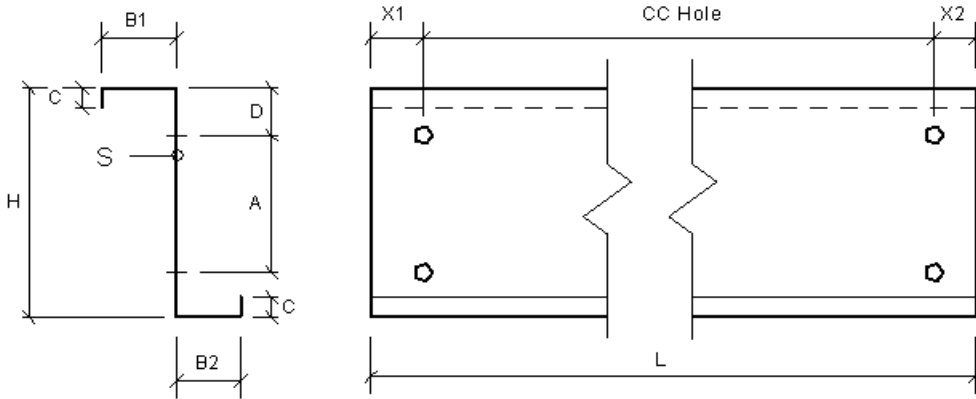


Antal	(L)Længde	CC HOLE	X1	X2	TYPE
		-80	40	40	Z01
		0			
		0			
		0			
		0			
		0			
		0			
		0			
		0			
		0			
		0			
		0			
		0			
		0			
		0			
		0			
		0			
		0			
		0			
Total	Meter				
0	0				

Z-250 ASE

H	B1	B2	C	A	D	Holes	S
250	68	60	23/20	150	50	19x25	

S = thickness

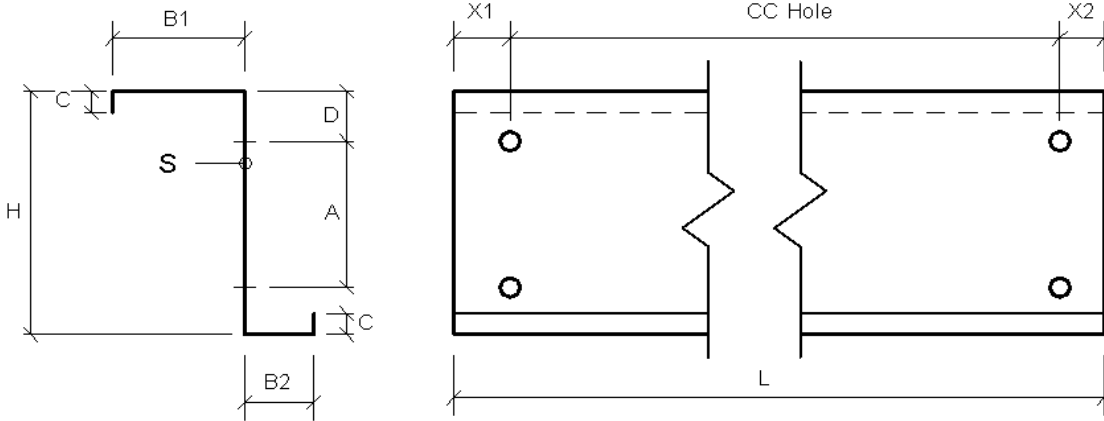


Antal	(L)Længde	CC HOLE	X1	X2	TYPE
		-80	40	40	Z01
		0			
		0			
		0			
		0			
		0			
		0			
		0			
		0			
		0			
		0			
		0			
		0			
		0			
		0			
		0			
		0			
		0			
		0			
		0			
Total	Meter				
0	0				

Z-250 ÅSE - M/BRED OVERFLANGE

H	B1	B2	C	A	D	Holes	S
250	100	60	23/20	150	50	19x25	

S = thickness

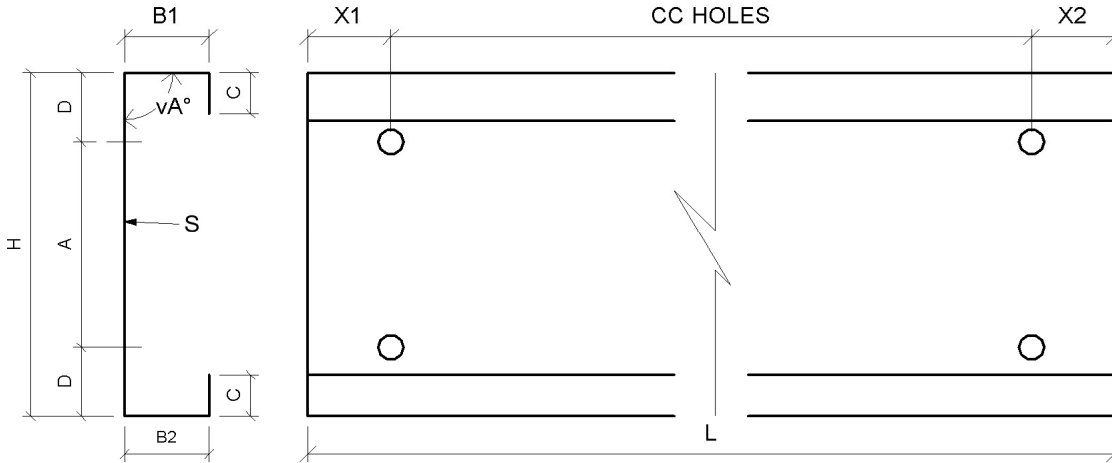


Antal	(L)Længde	CC HOLE	X1	X2	TYPE
		-80	40	40	
		0			
		0			
		0			
		0			
		0			
		0			
		0			
		0			
		0			
		0			
		0			
		0			
		0			
		0			
		0			
		0			
		0			
		0			
Total	Meter				
0	0				

C-250 ÅSE

H	B1	B2	C	A	D	Holes	vA°	S
250	60	60	23	150	50	19x25		

S = thickness

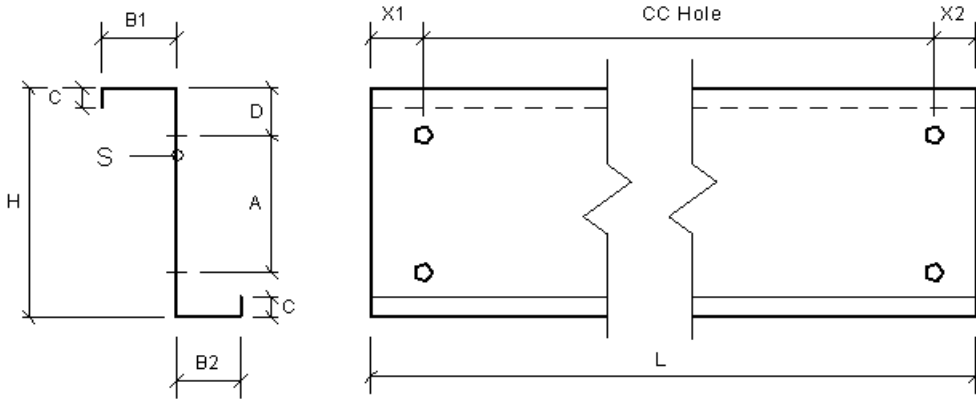


Antal	(L)Længde	CC HOLE	X1	X2	TYPE
		-80	40	40	Z01
		0			
		0			
		0			
		0			
		0			
		0			
		0			
		0			
		0			
		0			
		0			
		0			
		0			
		0			
		0			
		0			
		0			
		0			
Total	Meter				
0	0				

Z-300 ASE

H	B1	B2	C	A	D	Holes	S
300	75	65	23/20	200	50	19x25	3.0

S = thickness

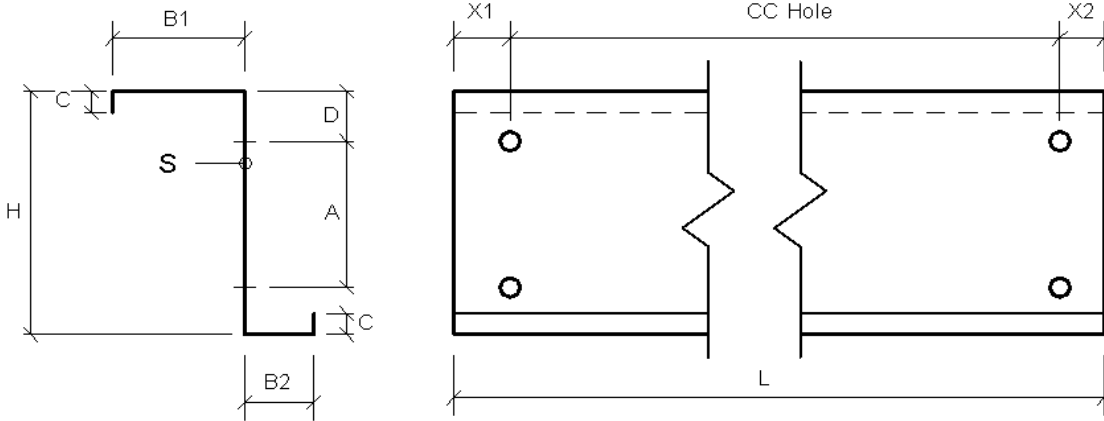


Antal	(L)Længde	CC HOLE	X1	X2	TYPE
		0	0	0	Z01
		0			
		0			
		0			
		0			
		0			
		0			
		0			
		0			
		0			
		0			
		0			
		0			
		0			
		0			
		0			
		0			
		0			
		0			
Total	Meter				
0	0				

Z-250 ÅSE - M/BRED OVERFLANGE

H	B1	B2	C	A	D	Holes	S
300	100	60	23/20	200	50	19x25	

S = thickness

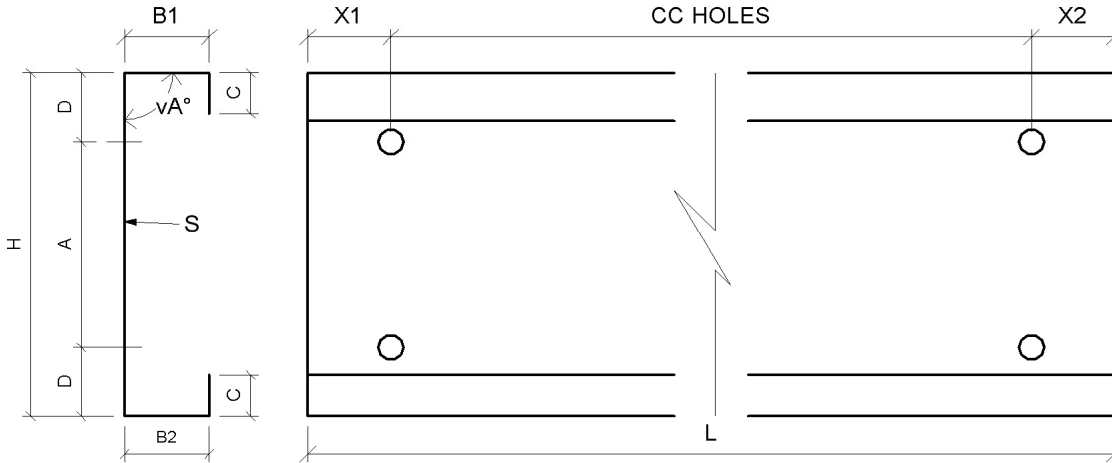


Antal	(L)Længde	CC HOLE	X1	X2	TYPE
		-80	40	40	
		0			
		0			
		0			
		0			
		0			
		0			
		0			
		0			
		0			
		0			
		0			
		0			
		0			
		0			
		0			
		0			
		0			
		0			
Total	Meter				
0	0				

C-300 ÅSE

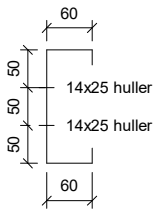
H	B1	B2	C	A	D	Holes	vA°	S
300	60	60	23	200	50	19x25	90	

S = thickness

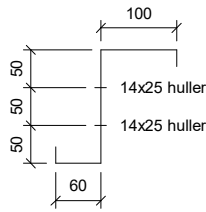


Antal	(L)Længde	CC HOLE	X1	X2	TYPE
		-80	40	40	Z01
		0			
		0			
		0			
		0			
		0			
		0			
		0			
		0			
		0			
		0			
		0			
		0			
		0			
		0			
		0			
		0			
		0			
		0			
Total	Meter				
0	0				

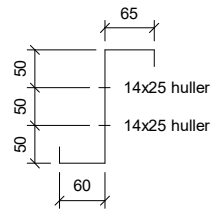
Standard hulplaceringer åse (Mellem stålrammer)



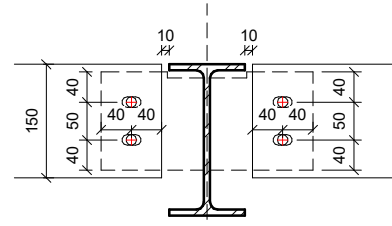
C150



S150

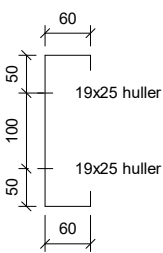


Z150

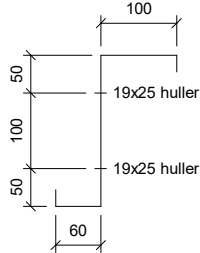


Placering ift Stålrigte

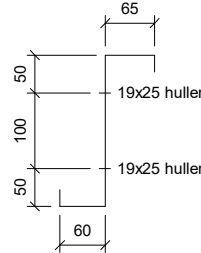
(Ø14 huller i åselapper)



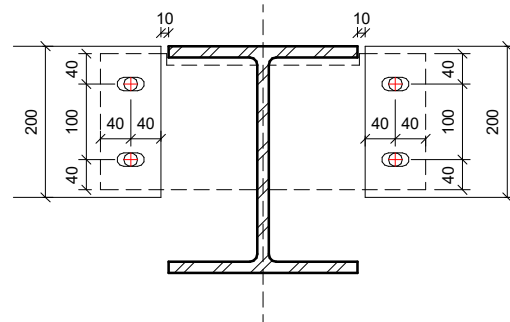
C200



S200

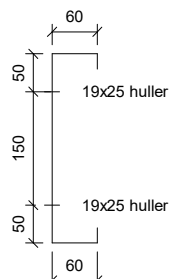


Z200

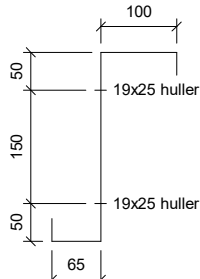


Huller i åselapper

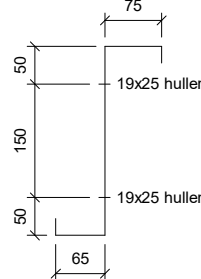
(Ø18 huller i åselapper)



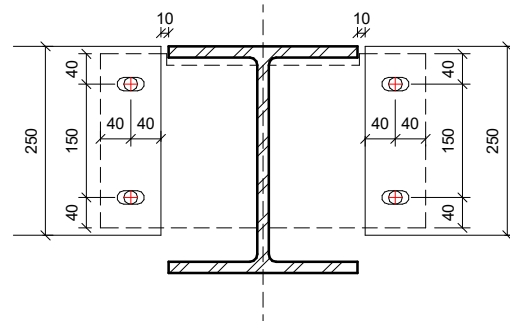
C250



S250

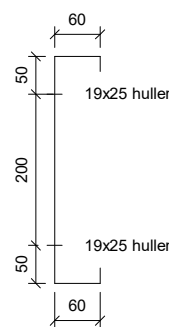


Z250

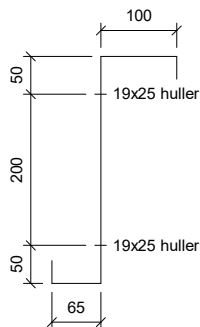


Huller i åselapper

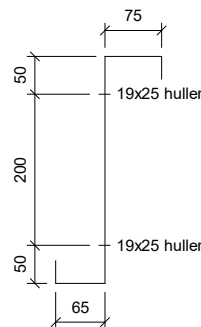
(Ø18 huller i åselapper)



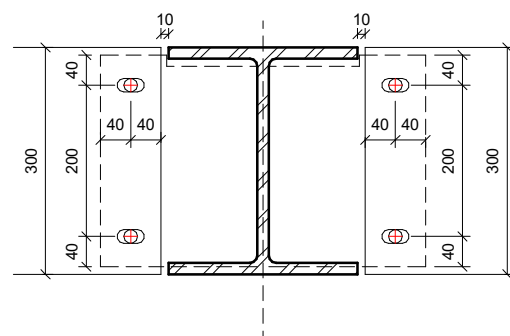
C300



S300



Z300

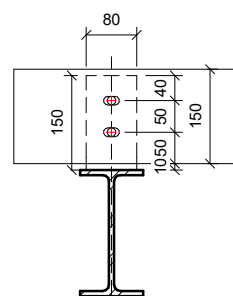
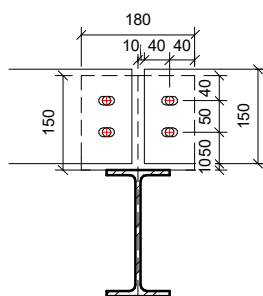
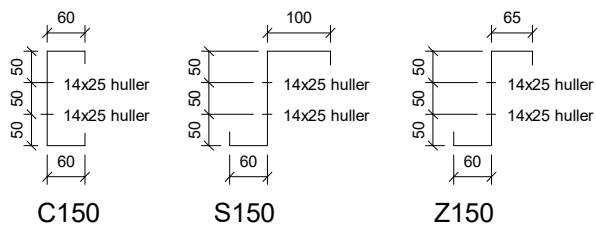


Huller i åselapper

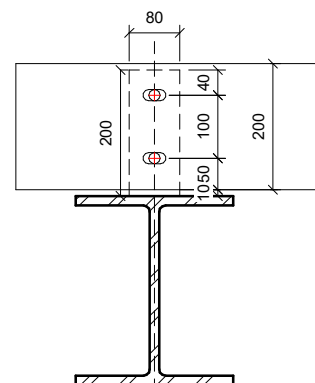
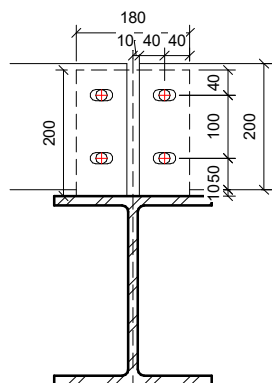
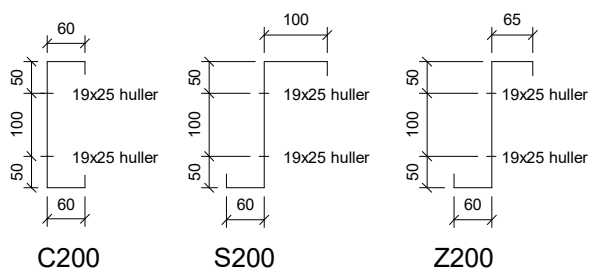
(Ø18 huller i åselapper)

TYPE S åse er med ekstra bred overflange som bruges ved længesamlinger på taget og ved ovenlys i kip

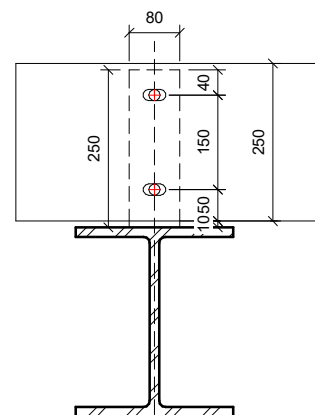
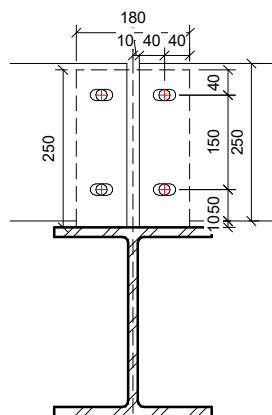
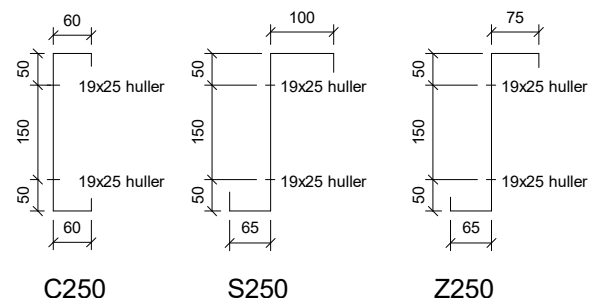
Standard hulplaceringer åse (ovenpå stålrammer)



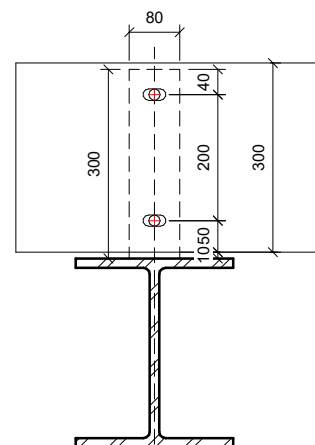
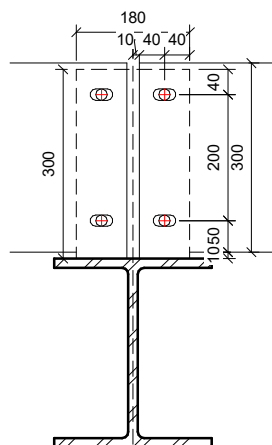
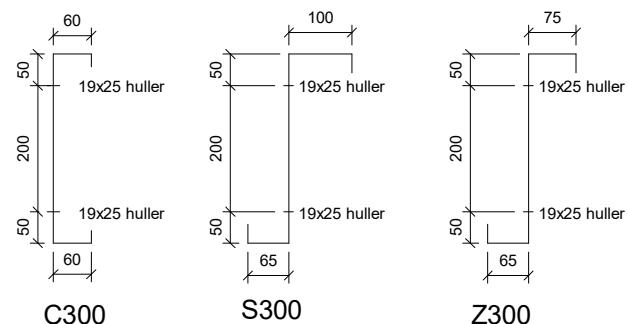
Placering ift Stålrigte (Mellemfag) Placering ift Stålrigte (Gavlfag)
(Ø14 huller i åselapper)



Huller i åselapper (mellemfag) Huller i åselapper (Gavlfag)
(Ø18 huller i åselapper)



Huller i åselapper (mellemfag) Huller i åselapper (Gavlfag)
(Ø18 huller i åselapper)



Huller i åselapper (mellemfag) Huller i åselapper (Gavlfag)
(Ø18 huller i åselapper)

TYPE S åse er med ekstra bred overflange som bruges ved længesamlinger på taget